

Plusrite®

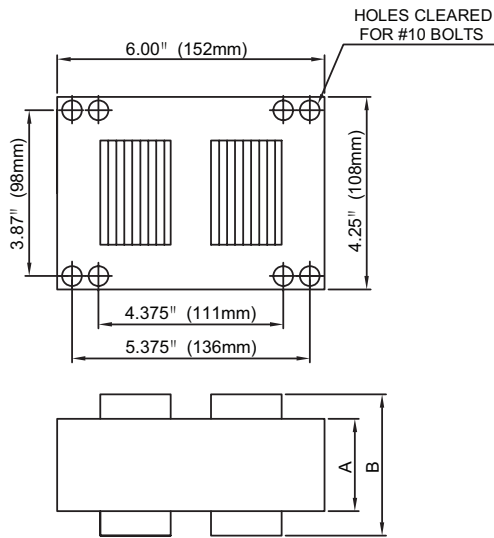
CATALOG NUMBER: BAPS750-CWA/V4

750W M149

Pulse Start Metal Halide Lamp Ballast

60 Hz CWA

4X6 CORE.WMF

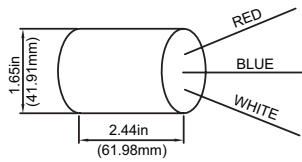
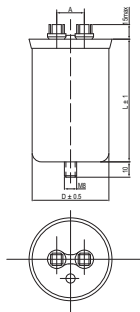


Capacitor:

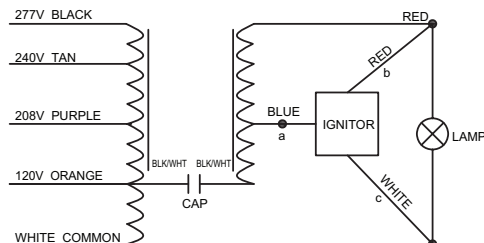
Microfarads: 24.0 uf
 Volts (Max): 480 V
 Case Temp(Max): 100°C
 D: 1.97 in
 L: 3.94 in
 A: 0.79 in

Ignitor:

Case Temp (Max): 105 °C
 BTL Distance (Max): 2 ft



Wiring Diagram:



Input Volts		120	208	240	277
Circuit Type	CWA				
REGULATION					
Line Volts	±10%				
Lamp Watts	±10%				
LINE CURRENT(Amps)					
Operating		6.80	4.00	3.40	3.00
Open Circuit		4.60	2.60	2.30	2.00
Starting		4.80	2.80	2.40	2.10
RECOMMENDED FUSE (Amps)					
		17	10	9	8
TEMPERATURE RATINGS					
Insulation Class	180 (H)				
Coil Temperature Code		B	C	B	B
Benchtop Coil Rise		75.9	81.6	75.9	78.2
Power Factor (Min)	90%				
Input Watts	815 W				
Efficiency					
NOM. OPEN CIRCUIT VOLTAGE					
	370				
INPUT VOLTAGE AT LAMP DROPOUT					
		60	105	120	140
MIN AMBIENT STARTING TEMP					
	-20°F/-30°C				
60 HZ TEST PROCEDURES					
High Potential Test (Volts)					
1 Minute	2,000 V				
1 Second	2,500 V				
Open Circuit Voltage Test (V)					
	335 - 405				
Short Circuit Current Test (A)					
Secondary Current		Min	4.30		
		Max	5.30		
Input Current		Min	3.70	2.00	1.85
		Max	5.50	3.10	2.75
CORE and COIL Specifications					
Dimension A (in)	2.80				
Dimension B (in)	4.80				
Weight (lbs)	18.0				
Lead Lengths (in)	12				
CAPACITOR REQUIREMENT					
Microfarads	24.0uf				
Volts (Min)	480 V				

Data is based upon tests performed by Plusrite in a controlled environment and is representative of relative performance. Actual performance can vary depending on operating conditions. Specifications are subject to change without notice.

Coil material: Al/Al